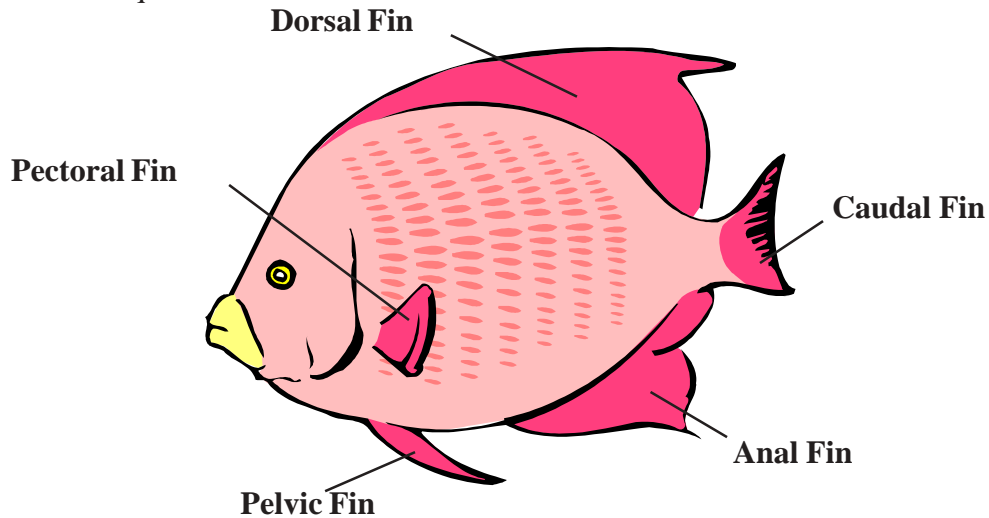


Which Fin is Used to Swim?

Name _____

Fish use their fins to move through the water. But different fish use different fins for locomotion.

Look at the diagram below and notice how each fin has a different name. Remember that on certain fish, a particular fin may be exaggerated and elaborate, or tiny and hard to see. That's what makes tropical fish so unique and beautiful.



Choose a fish to observe in the zoo's aquarium. After you watch it swim for a few minutes, decide which is the primary fin used to propel the fish through the water. (Hint: This is the fin that moves the most when the fish is swimming.) Then write the fish's name in the appropriate box below. Continue until you have watched ten fish. Do you notice anything about the groups of fish you have created?

| | | |
|---------------------|-------------------|-------------------|
| Pectoral Fin | Dorsal Fin | Caudal Fin |
| | | |
| Pelvic Fin | Anal Fin | |
| | | |